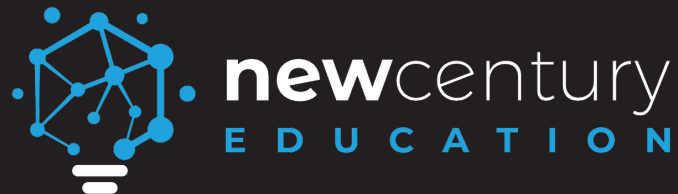


Customer Success Story

| Education

saai.



## Empowering Academic Success Through Predictive Insights



Customer Name: New Century Education (NCE)

Industry: Education

Geography: United Arab Emirates (UAE)

Function: Academic Performance Management

Business Value Driver: Enhanced Student Outcomes  
Through AI-Driven Insights

## Challenges

---

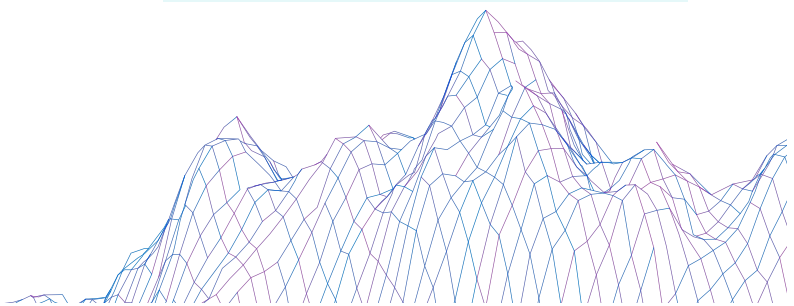
New Century Education (NCE), a leading name in the UAE's educational sector, is committed to fostering academic success among its diverse student body. However, with thousands of students across multiple campuses, identifying and supporting underperforming students early posed a significant challenge. The reliance on disparate data sources and manual intervention methods meant many students' academic struggles were only addressed after their performance had already declined.

Recognizing the need for a proactive and data-driven approach, NCE partnered with SAAL to develop an AI-driven solution to identify at-risk students early and recommend actionable interventions.

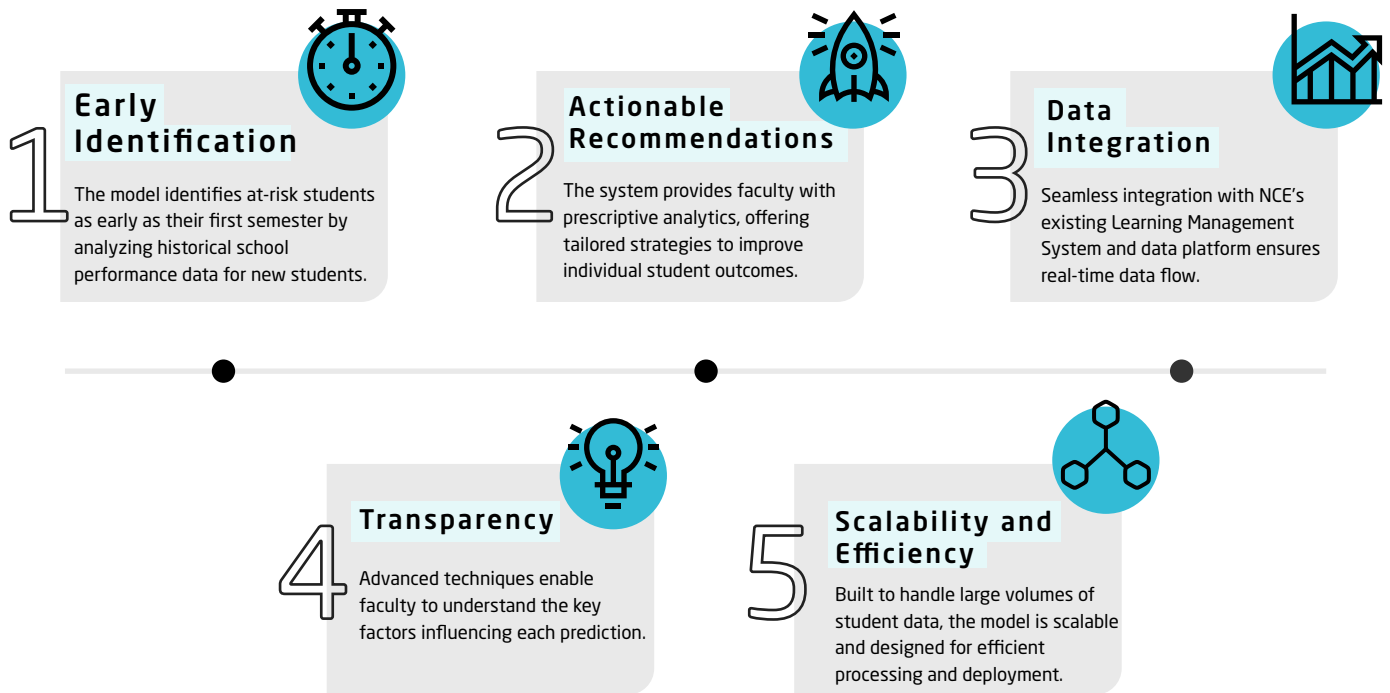
**Delayed Intervention:** Traditional methods identified at-risk students too late for impactful corrective measures.

**Data Silos:** Fragmented data sources, including academic, demographic, and behavioral data, hindered holistic student assessments.

**Scalability:** A lack of scalable predictive tools limited NCE's ability to address the growing student population effectively.



SAAL developed a comprehensive predictive model tailored to NCE's requirements, leveraging cutting-edge AI and machine learning (ML) technologies. The Student At-Risk solution was designed to empower faculty and administration with timely insights into student performance, enabling targeted and effective interventions.



## Results

The "Student At-Risk" solution transformed NCE's approach to academic performance management, delivering measurable impact:

### Early Interventions

Faculty could identify and address at-risk students weeks before traditional methods allowed, improving CGPA scores and retention rates.

### Enhanced Transparency

Faculty gained a clear understanding of the factors influencing student risk through explainable AI features, fostering trust in the system.

### Widespread Adoption

User-friendly interfaces and intuitive analytics led to rapid adoption across campuses, with faculty actively leveraging insights to drive student success.

### Improved Outcomes

User-friendly interfaces and intuitive analytics led to rapid adoption across campuses, with faculty actively leveraging insights to drive student success.